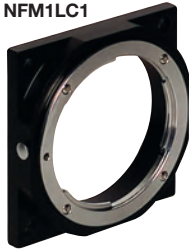


Nikon 35 mm Bayonet-Style Lens Adapters

NFM1LC1



NFM1LC1
with LC1-USB Line Camera



NEW
products

NFM1



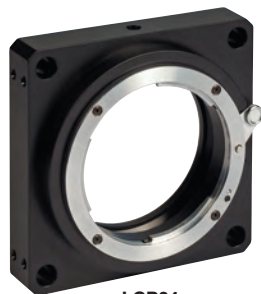
Front View

Back View



SM2
(Ø2.035"-40)
Internal
Thread

Mechanical
Drawings Available on the
WEB



LCP04

SM2NFM



Use the NFM1 to
Quickly Connect
Standard F-Style
35 mm Camera
Lenses

All Components
Sold Separately



NFM1LC1 Post-Mountable F-Mount Adapter for LC1-USB Line Camera

The NFM1LC1 is designed to adapt F-Mount-based lens systems to our popular LC1-USB CCD Line Camera (see page 1307), which is ideal for applications that require adjustable zoom and focal length for crisp imaging. Counterbores for #2 cap screws are provided on the four corners of the mounting plate for attaching the adapter to the front surface of the LC1-USB.

NFM1 Post-Mountable F-Mount Adapter

This adapter easily integrates industry standard F-Mount interchangeable camera lens mount into an optical setup. The quick-connect F-Mount adapter ring securely holds Ø35 mm lens assemblies and locks the assembly into place with a spring-actuated lock lever. The NFM1 has an #8-32 and an M4 x 0.7 tap on its base for mounting to standard Thorlabs' posts. Four #8 (M4) counterbores are provided in each corner for ultra-stable mounting, thus making this adapter ideal for OEM-level optomechanical assemblies.

LCP04 60 mm Cage-System F-Mount Adapter

The LCP04 is a 60 mm Cage Plate F-Mount adapter. It has internal SM2 threading on the back side of the adapter for lens tube integration. For post mounting, there are #8-32 and M4 x 0.7 mounting holes on the side of this plate. The mount can also be used to hold optics up to 0.33" (8.4 mm) thick using an SM2RR retaining ring (included).

SM2NFM External SM2-Threaded F-Mount Adapter

The SM2NFM adapter offers a convenient way to use an F-Mount with internally SM2-threaded components, such as our Ø2.00" lens tubes.

FEATURES	NFM1	LCP04	NFM1LC1	SM2NFM
F-Mount Adapter Ring	✓	✓	✓	✓
SM2 Internal Threading	✓	✓		
SM2 External Threading				✓
SM2RR Retaining Ring Included	✓	✓		
#8-32 and M4 x 0.7 Tap for Post Mounting	✓	✓		
Clearance Holes for #8 (M4) Screws	✓			
Clearance Holes for #2 (M2) Screws			✓	
Clearance Holes for Ø0.24" (Ø6 mm) ER Rods		✓		

ITEM#	\$	£	€	RMB	DESCRIPTION
NFM1LC1*	\$ 125.50	£ 87.00	€ 111.50	¥ 1,059.80	Nikon F-Mount Adapter for LC1-USB
NFM1*	\$ 135.70	£ 94.10	€ 120.50	¥ 1,145.90	Nikon F-Mount Adapter, Internal SM2 Thread
LCP04*	\$ 133.00	£ 92.20	€ 118.10	¥ 1,123.10	Nikon F-Mount Adapter for 60 mm Cage System
SM2NFM	\$ 85.00	£ 59.00	€ 75.50	¥ 717.80	Nikon F-Mount Adapter, External SM2 Thread

*Includes one SM2RR Retaining Ring